



Industry-Leading AIOps for Networks & Infrastructure



Trusted by the World's Most Demanding Companies



Background

- Product launched 2021, Now 100+ employees
- Founding team led routing and switching at Juniper Networks
- Networking, application & AI/ML talent from Juniper, Cisco, Google, VMware, Nutanix
- Gartner recommended vendor for Network AIOps

Mission

- Correlate across ALL network, applications & infrastructure data
- Automate RCA and remediation
- Democratize access to insights using conversational natural language interfaces

Transformative Impact for Operations Teams

- MTTD, MTI and MTTR reduction
- Correlation & real-time root-cause analysis
- Outlier detection & predictive analytics
- Conversational AI with natural language querying

Gartner Recognition



Gartner
COOL
VENDOR
2023

“**Why Cool:** Selector Software's Selector Analytics takes an inventive approach to network monitoring that uses ML and AI to correlate network telemetry (metrics, logs and events) with third-party alerts, device configuration data and synthetic network measurement results.”

Dylan Roberts

Sr. Director Analyst, Monitoring & Observability

Gartner.

<https://www.gartner.com/document/4773431?ref=solrAll&refval=380254624>

Gartner.

Hype Cycle for
Site Reliability
Engineering
2024

Gartner.

Hype Cycle for
IT Service
Management
2024

Gartner.

Hype Cycle for
Infrastructure
Platforms
2024

Gartner.

Hype Cycle for
Infrastructure &
Operations
2024

Gartner.

Hype Cycle for
Management
Intelligence
2024

Gartner.

Hype Cycle for
Operation
Models
2024

Gartner.

Hype Cycle for
Agile &
DevOps
2024

Gartner.

Hype Cycle for
I&O
Automation
2024

Gartner.

Innovation
Insight:
AI Networking
2024

Today's Observability Challenges



Too many tools, too many dashboards, too many alerts

38 Network Dashboards

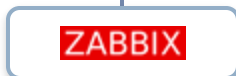
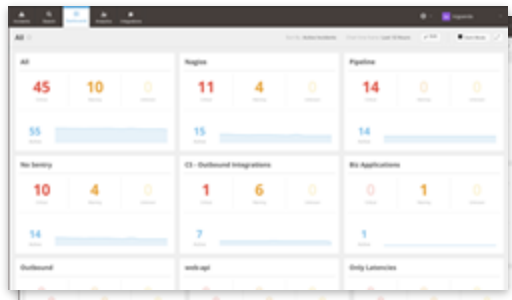


Logos depict example tools



Network Team

15 Infrastructure Dashboards

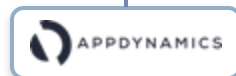


Logos depict example tools



Infrastructure Team

47 Application Dashboards

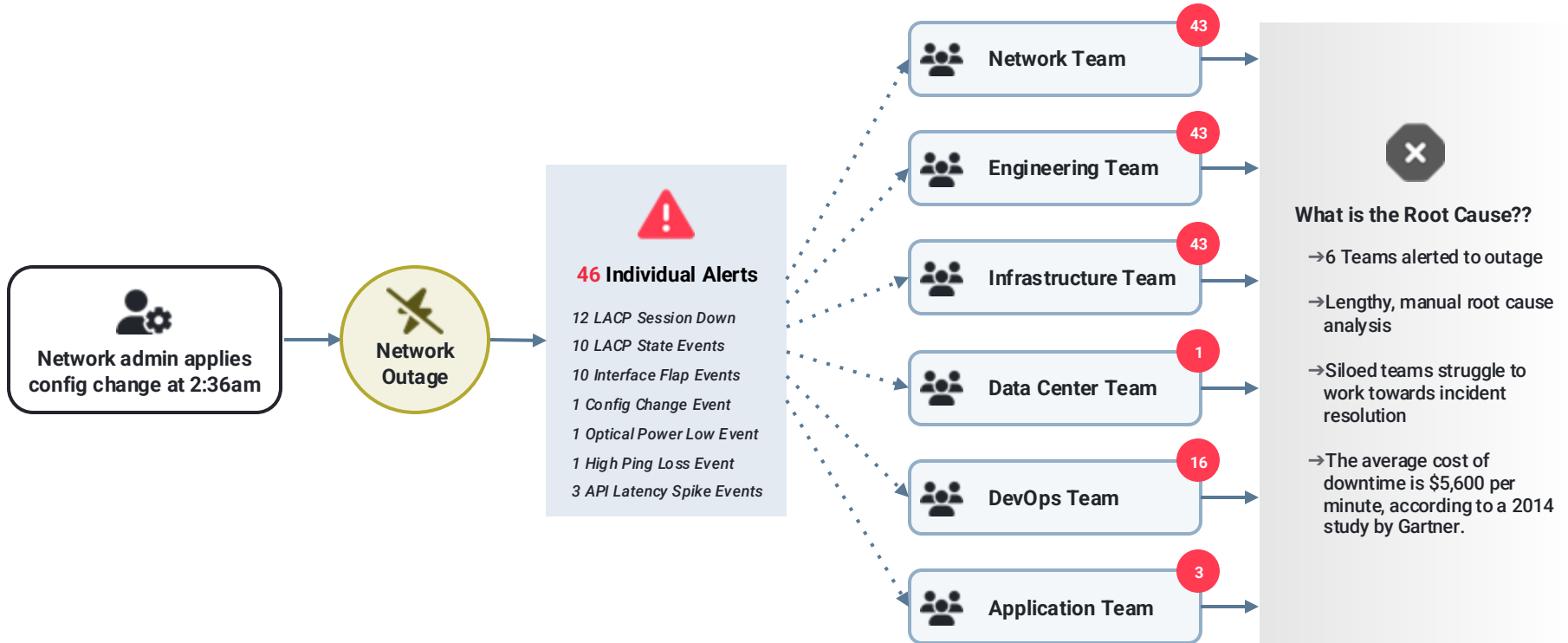


Logos depict example tools



Application Team

Today's Incident Response Challenges



Three Critical Operations Challenges Solved with AI



Collect

Heterogeneous Data

Metrics

SevOne Prometheus Logi cMonitor Zabbix

Logs

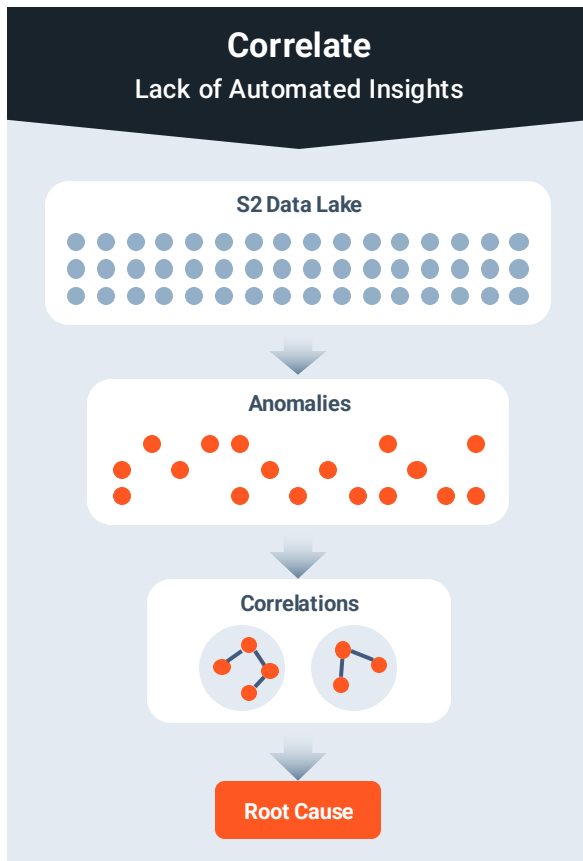
Splunk Elastic LogRhythm syslog-ng

CMDB, Metadata & Other Telemetry Sources

Juniper Cisco Kafka AWS

Dynatrace Netbox ServiceNow Webhook

Logos depict example tools



© Selector Software, Inc. • Confidential & Proprietary

Collaborate

Siloed Collaboration

Communication

Slack Microsoft Teams Zoom Webex

Alerting

Pagerduty Opsgenie Freshworks Twilio

ITSM & Ticketing

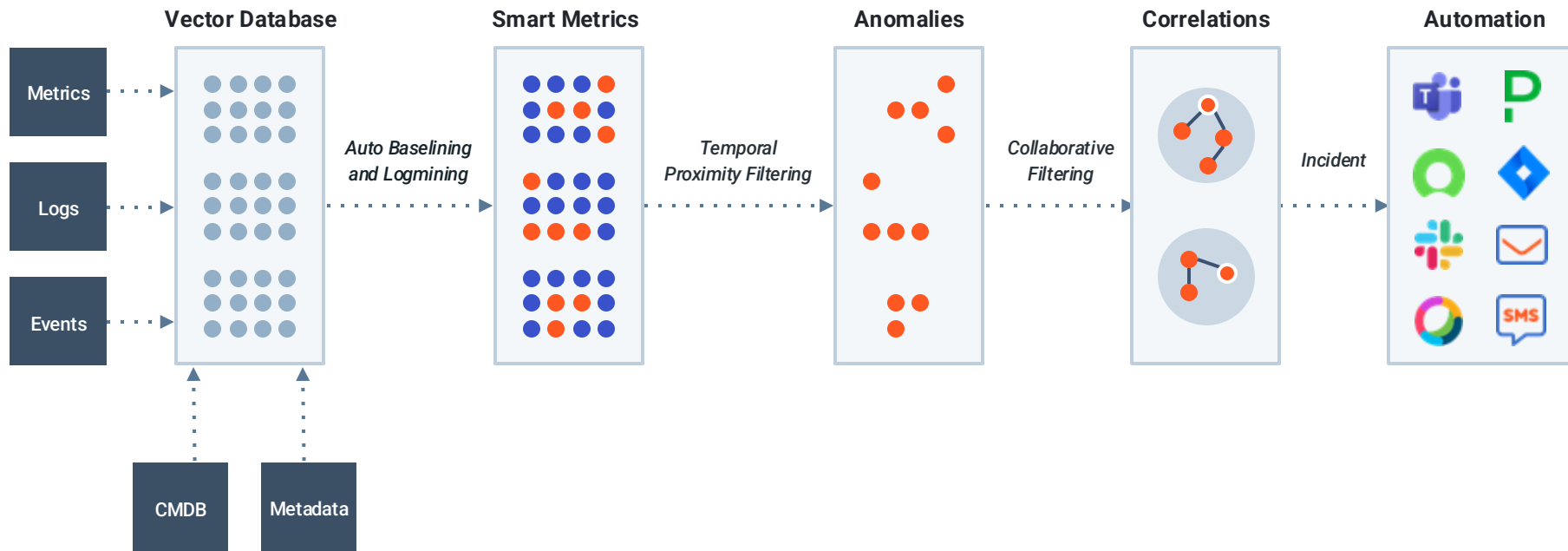
ServiceNow Jira BigPanda Asana

Orchestration & Automation

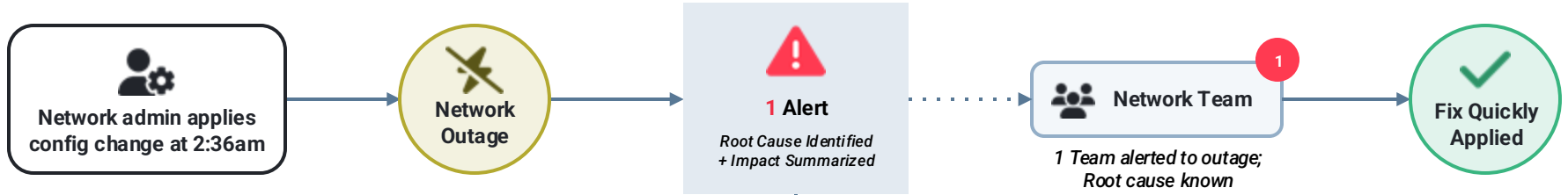
Ansible Itential Puppet Saltstack

Logos depict example tools

Proactive Detection & Remediation for Event Intelligence



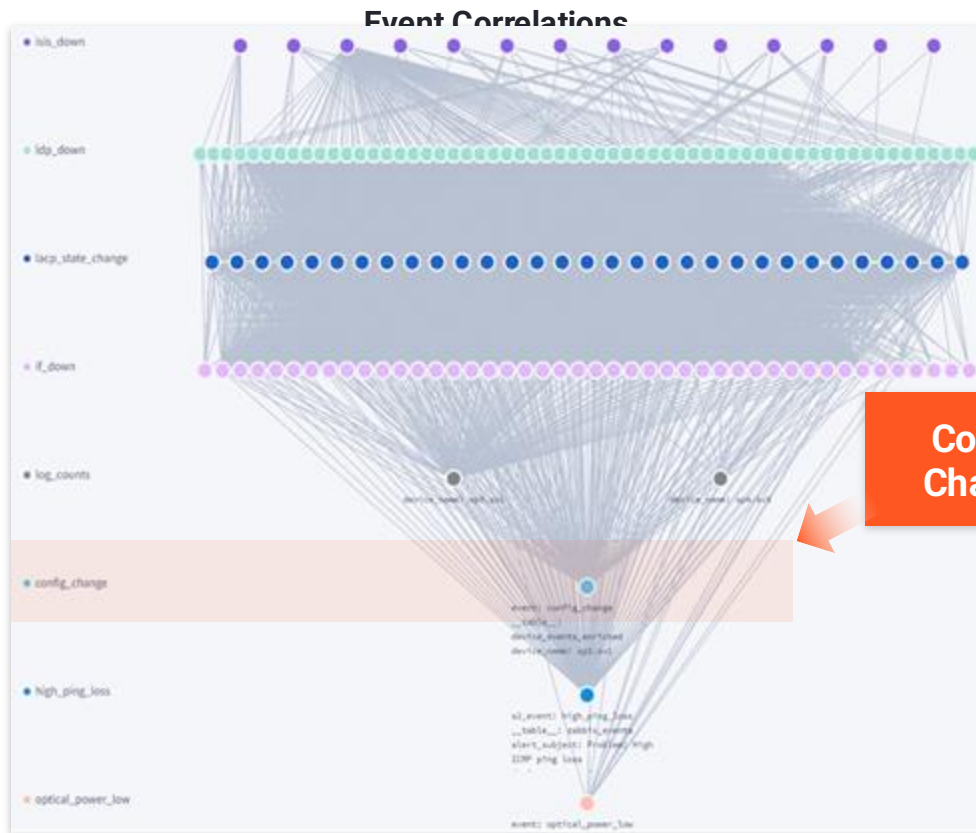
Incident Response with Selector



The screenshot displays the Selector interface. On the left, a network graph visualizes event correlation, showing a dense web of connections between various network components. On the right, a 'Smart Alert' notification is shown for a 'Critical Alert' regarding a configuration change at device 'crs1.aaa'. The alert details include a list of 43 correlated events, such as OSPF session down events, LACP state change events, interface flap events, and power loss events. The alert also specifies the affected devices, products, metrics, and regions.

Selector AI/ML-Driven Event Correlation **Selector Smart Alert**

Notifications Further Detail Correlations and RCA



Smart Alert

SelectorAIOps APP 1:26 PM

Alert Notification

Critical Alert

A configuration change at device **craa.aaa** by **Joe** caused a lot of network events. Different protocols were affected across the network and caused traffic losses

Alert Details

[S2AP Portal]

Devices Affected: mr01.abc, mr02.ddd, co1.aaa, bkb2.aaa, bkb1.eee
Products: Cloud OnRamp, Co-Distribution

43 Correlated Events:

- 12 LDP session down events
- 10 LACP state change events
- 10 Interface flap events
- 8 ISIS down events
- 1 Config change event
- 1 Optical power low event
- 1 High ping loss event

Metros: Dallas, Chicago
Region: Americas

See less

Was this alert useful?

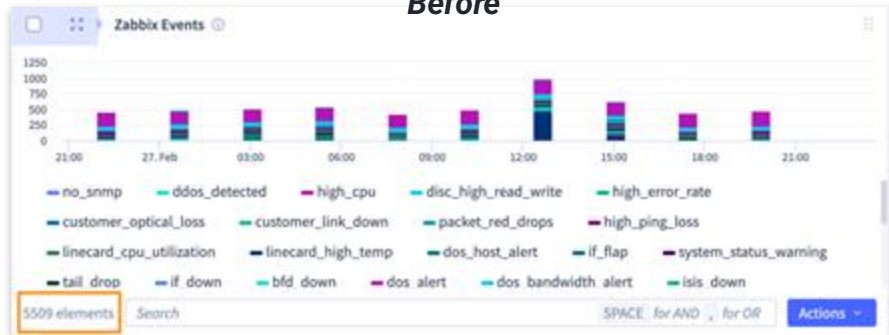
Config Change

Impact

Impact: World's Largest Digital Infrastructure Company



Before



Total Alerts = 5,000/day
Monthly Alerts = 150,000
Cost per Alert = \$2
Annual Alert Cost = \$3,600,000

After



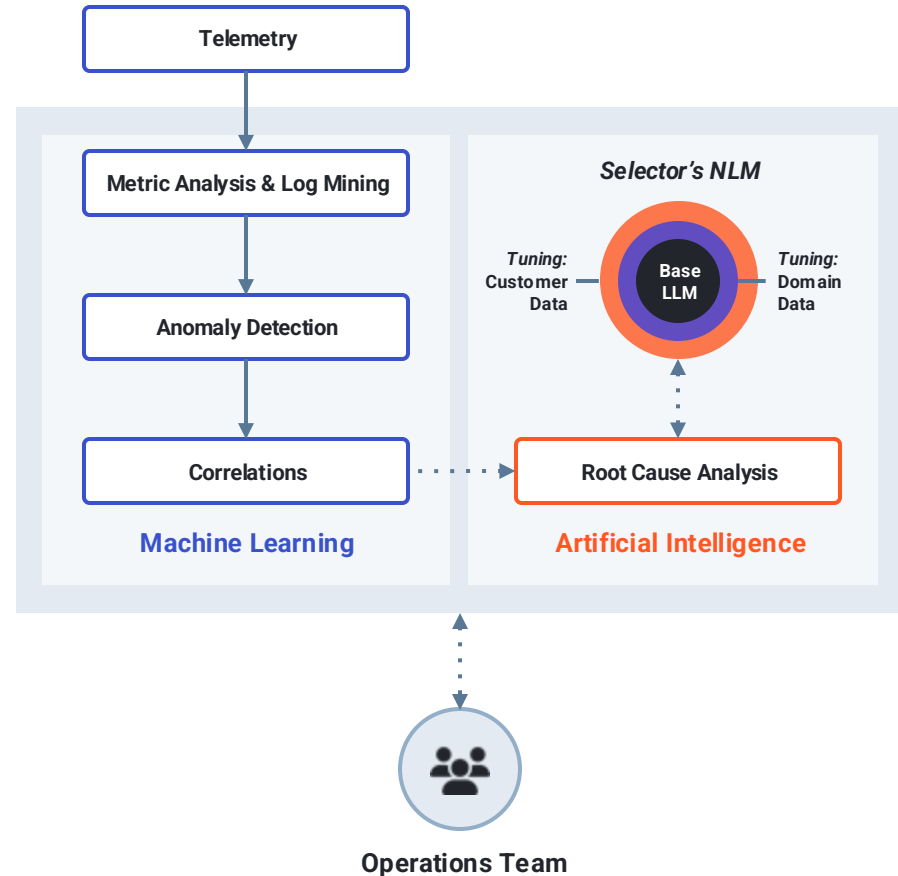
Selector AI Alerts = 68/day
Monthly Alerts = 2,040
Cost per Alert = \$2
Annual Alert Cost = \$48,960

Alert Reduction = 98%
Time, Effort, Resources (TER) Estimated Saving ~ \$3.5M

World's First Network Event Intelligence Solution



- **ML-Driven Analysis** baselines your network, infrastructure, and applications telemetry, establishing a sense for what's normal
- **Real-Time Anomaly Detection** leverages baselining to identify anomalies and correlate across your infrastructure
- **Domain-Specific Training** enables Selector's Network Language Model to understand natural language queries and specific details of your environment
- **Artificial Intelligence** identifies the probable root cause, drives predictive analytics, and powers Selector Copilot, a conversational interface that lets users investigate incidents and drill deeper for more insights.



Answer Your Unanswerable Questions with Selector Copilot



Connectivity

Is there good connectivity between public cloud applications (like payment) and global store properties?

Routing

What is affecting my prefix advertisements to my network peers?

Streaming

How is this multicast issue affecting delivery of video content to our subscribers?

Capacity Planning

When will capacity on my 100G link to Dallas be exhausted by growing demand?

SLAs

Are my transit gateways adequately provisioned to meet tenant SLAs?

User Experience



#selector Selector Copilot Conversational AI

John Doe
Are we having uplink issues at our properties in the US?

SelectorAIops
Here are the results for /Are we having uplink issues at our properties in the US
Click for details [S2AP Portal]

GenAI-based conversational interface

SelectorAIops APP 1:26 PM
Alert Notification

Critical Alert

A configuration change at device `craa.aaa` by Joe caused a lot of network events. Different protocols were affected across the network and caused traffic losses

Alert Details

[S2AP Portal]

Devices Affected: mr01.abc, mr02.ddd, co1.aaa, bkb2.aaa, bkb1.eee
Products: Cloud OnRamp, Co-Distribution

43 Correlated Events:

- 12 LDP session down events
- 10 LACP state change events
- 10 Interface flap events
- 8 ISIS down events
- 1 Config change event
- 1 Optical power low event
- 1 High ping loss event

Metros: Dallas, Chicago
Region: Americas
[See less](#)

Preview Mute Acknowledge Incident

Was this alert useful? ▾

Actionable alerts provide remediation

Why Selector?



Managed Service

Selector isn't just a tool, we do all the work, too.



Data Collection

Globally distributed collectors push data to a highly-scalable backend.



Highly Programmable

Leverage any data from any source with our flexible data compiler.



Thank You



Selector Tech Stack

